

Solenoids



- Part # Solenoid P826002
- Solenoid for explosion proof applications
- Solenoid in switch box



- Solenoid for Dwyer Valves
- All 120 Volt



- Solenoid for Asco Valves
- Voltage printed on this end

Valves



- 1 1/4" NPT Brass Asco Valve
- Straight through Brass Asco Valve
- Solenoid voltage will be same as the motor in most applications



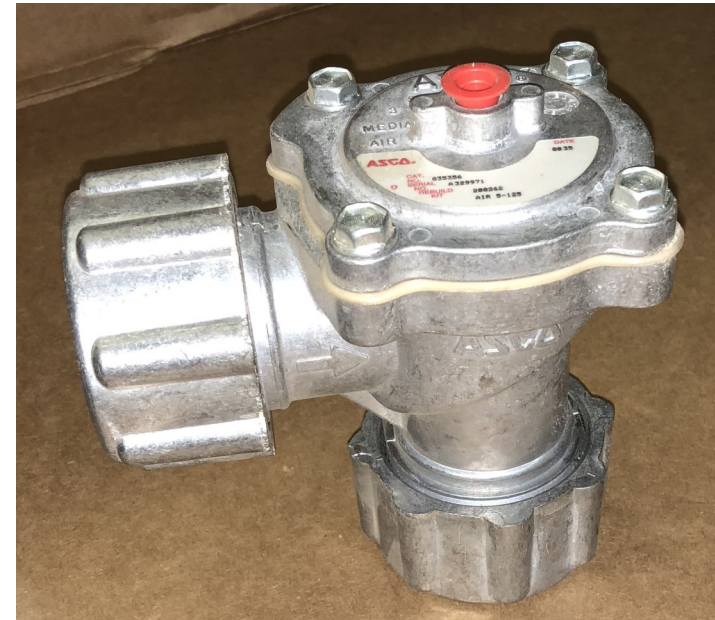
- 90° Asco Valve



- 3/4" Pipe inlet Asco Valve
- Straight through Asco Valve



- 90° Dwyer Valve



- Explosion Proof Asco Valve

Starters



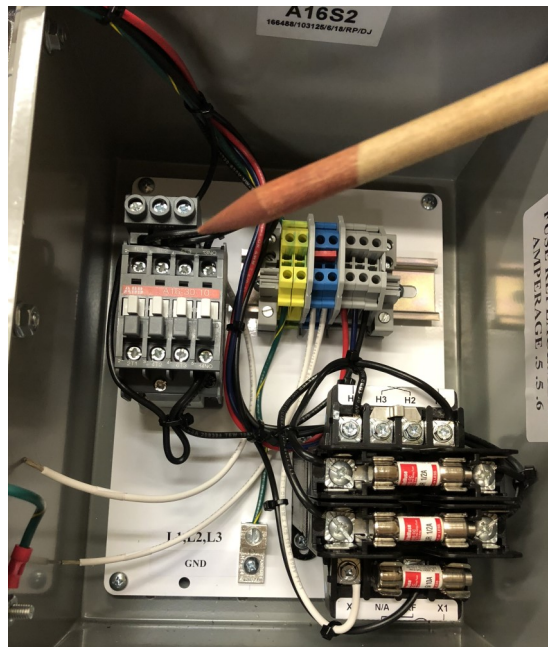
- Part #A9-30-10
- Need to know voltage (top side)
- Small Magnetic Starter



- Part #A16-30-10
- Need to know voltage (top side)
- Medium Magnetic Starter



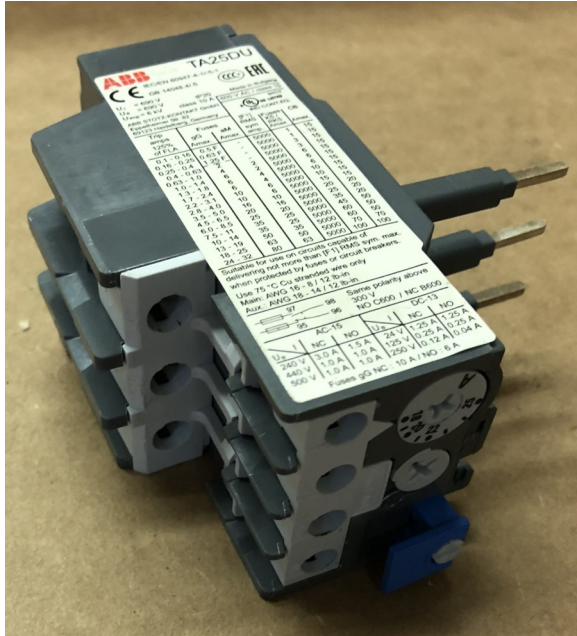
- Part #A26-30-10
- Need to know voltage (top side)
- Large Magnetic Starter



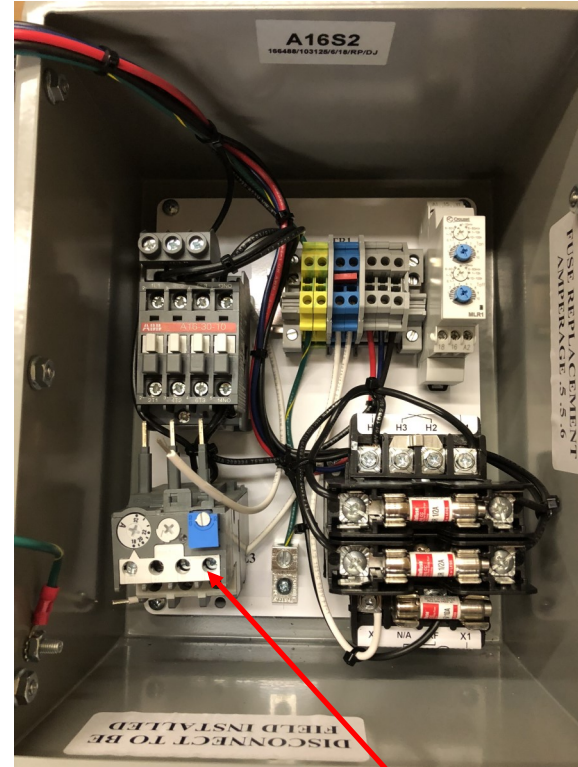
A GLIMPSE IN THE BOX:

- Looking in the power box the Magnetic Starter should be on the upper left-hand side (as shown)
- The Magnetic Starter turns the motor on

Overload



- Part #TA25DU-? (?= top amperage on dial)
- Overload for ABB Contactor
- The dial will indicate the amperage



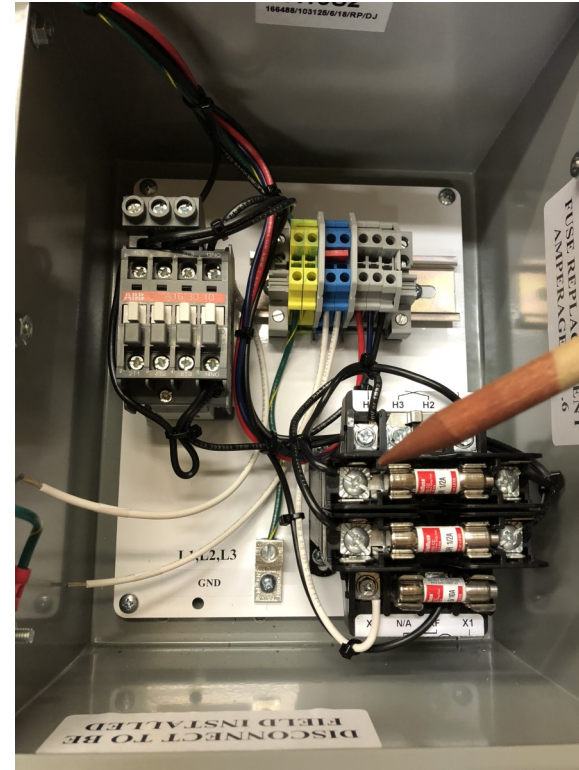
A GLIMPSE IN THE BOX:

- Looking in the power box the Magnetic Starter should be on the lower left-hand side (as shown)
- The Overload protects the motor from overloads

Transformer



- Part #SL100QP (standard) or SL100ACP (up to 600v)
- Transformer in A16S2 Boxes
- Pictured is most recent model
- Will work for 230/460V replacement



A GLIMPSE IN THE BOX:

- Looking in the power box the Magnetic Starter should be on the lower right-hand side (as shown)
- 120V machines have transformer there
- IF machine is changed to 220V on 120V, only 1 fuse is used
- Transformer reduces to 120V for filter cleaning process

ABB Boxes

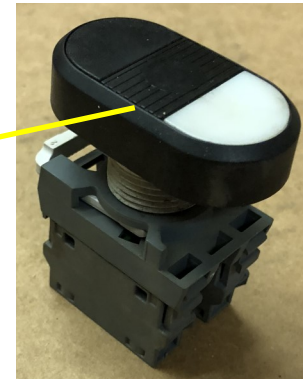
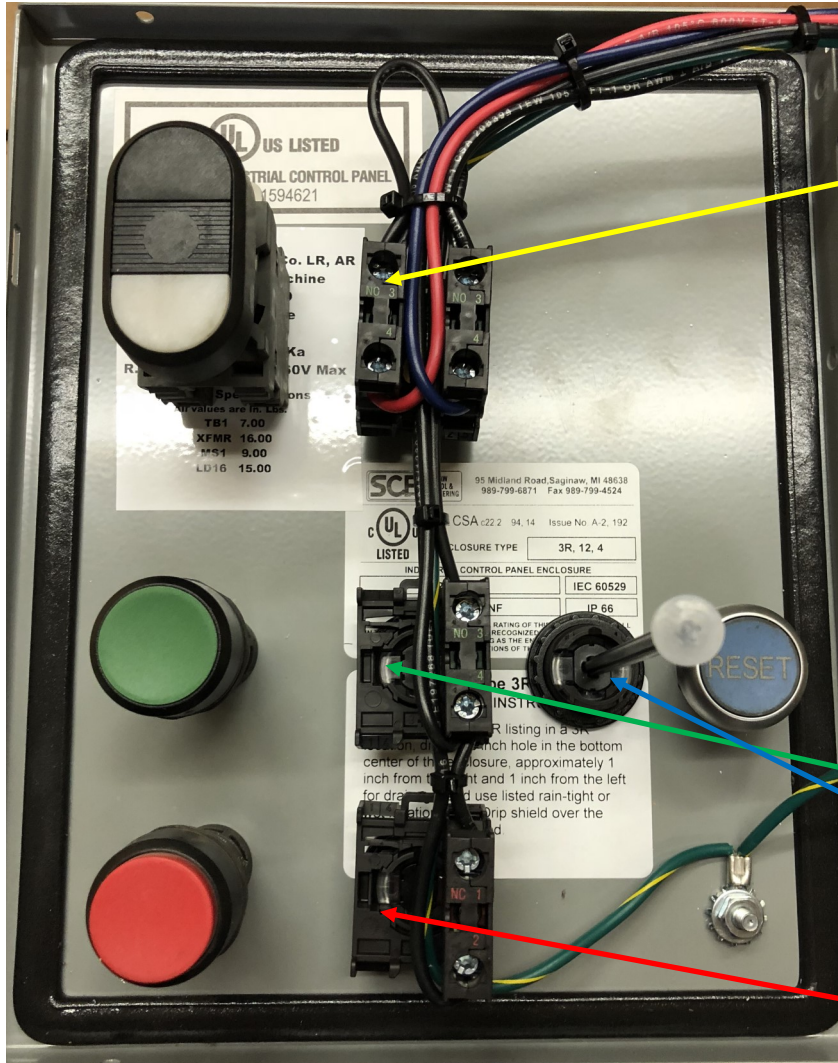


- A9SD-? (Need to know contactor voltage and overload amperage)
- ABB Box for Tube tables (old style)

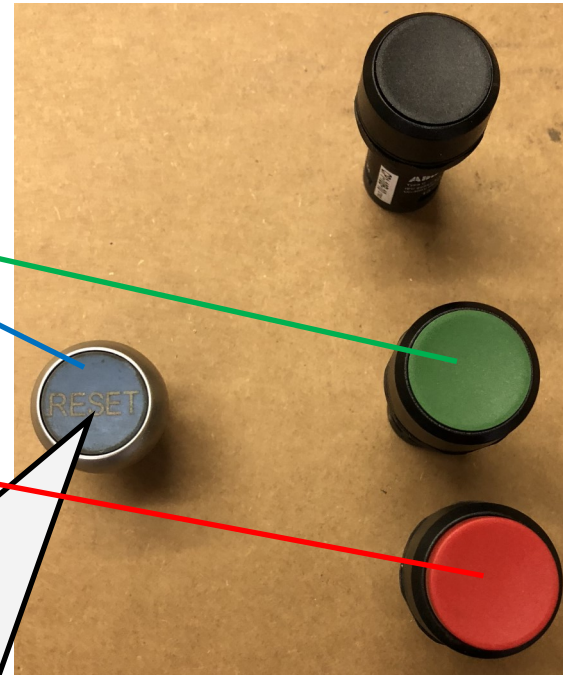


- Part #EOT16
- ABB Box for 120 Volt; 1.5-2 HP Tube tables

Box Buttons



- Part #MPD5-11B
- White/Black double push button
- Filter Clean Button



- Filter Clean Button on old style booths
- Part #CP1-10G-10
- Solid Green start push button
- Motor Start Button

- Part #CP3-10R-01
- Solid Red stop push button
- Motor Stop Button



- Part #M22-D2-B-GB14
- Push button reset
- Reset Button

A GLIMPSE IN THE BOX:

- Looking in the power box to show front and back views of buttons